

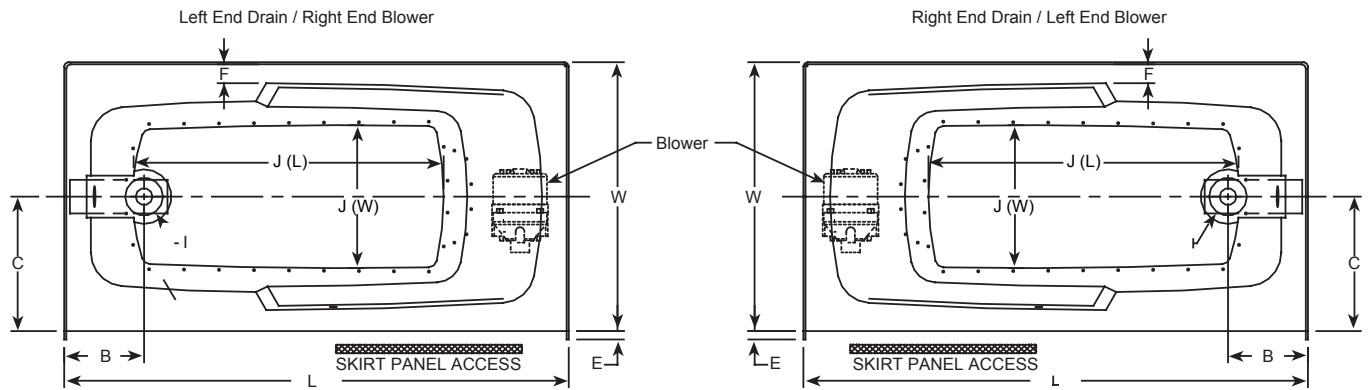
Cetra® 6032 Skirted Bath Bathtubs

Letter	Description	English	Metric
-	Drain Location	Left / Right Hand	Left / Right Hand
-	Blower Location	Opposite end of drain location	Opposite end of drain location
-	Cutout	N/A	N/A
-	Total Weight	842 lb	382 kg
-	Floor Loading	62 lb/ft ²	309 kg/m ²
-	Operating Gallons (Min/Max)	31 Gal / 55 Gal	117 L / 208 L
-	Product Weight	84 lb	38 kg
L	Outer Length	60.00"	1524 mm
W	Outer Width	32.00"	813 mm
H	Overall Height	20.50"	521 mm
A	Overflow Height	18.00"	457 mm
B	Long Edge to Drain Center	9.38"	238 mm
C	Short Edge to Drain Center	16.00"	406 mm
D	Drain Shoe Length	7.00"	178 mm
E	Flange Height	1.00"	25 mm
F	Deck Width	1.50"	38 mm
G	Service Access Dimensions	See Illustration Below	See Illustration Below
I	Floor Cutout for Drain	12.00" x 4.00"	305 mm x 102 mm
J	Interior Dimensions: J(W)x J(L)	41.50" x 18.00"	1054 mm x 457 mm
-	Number of Injectors	32	32

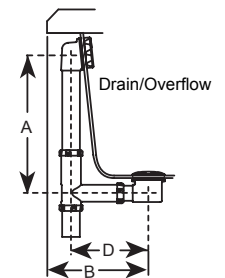
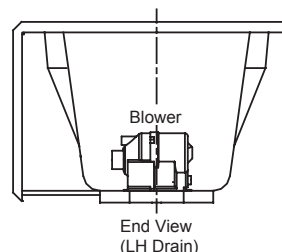
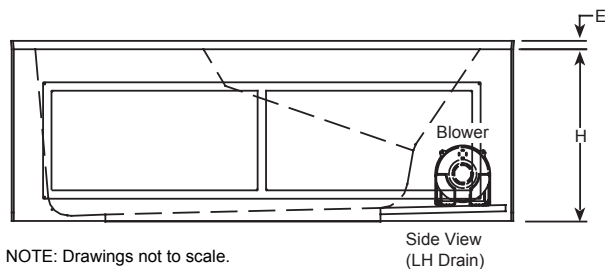
NOTE

The overall dimensions are nominal with a tolerance of +0 and - .25" (6mm).
 Electrical Specifications
 (Each component requires a separate, dedicated GFCI protected circuit)

Blower 120V 15A 60HZ

Key Dimensions


*Deck width reflects only area indicated on detail.



NOTE: Drawings not to scale.